



Brindley Place, Uxbridge, UB8 2FA

- Two double bedrooms
- Gated development
- EPC Rating - B
- Ground floor apartment
- Concierge 7am - 7pm
- Very well presented property
- Students are very welcome
- Close to Brunel University
- Available Mid/End August 2026
- Parking offered

£1,750 PCM

Cameron Estate Agents
195 High Street,
Middlesex, Uxbridge, UB8 1LB

E: uxbridge@cameron.co
T: 01895252000

www.cameron.co

arla | propertymark

PROTECTED

naea | propertymark

PROTECTED

Whilst every care has been taken to ensure the accuracy of these particulars, none of the statements contained herein are to be relied upon as representations of fact. These particulars do not constitute an offer or contract.

Description

Cameron offer this two double bedroom apartment which is located in an exclusive development conveniently located within easy access of both Uxbridge Town Centre and West Drayton High Street. Offering a range of transport links including the West Drayton main line train station with direct access on the Elizabeth Line and Uxbridge tube station. The property consists of a luxuriously appointed kitchen with integrated appliances, open plan living room space, two double bedrooms with fitted wardrobes and fully fitted luxury shower-room. Communal gardens, peaceful canal, secure parking, super-fast internet connections and underfloor heating. This exclusive apartment is presented furnished and available Mid July 2025. Perfectly poised for Stockley Business Park, Heathrow, major road links including the M4/A40 and walking distance to Brunel University.

IMPORTANT NOTICE

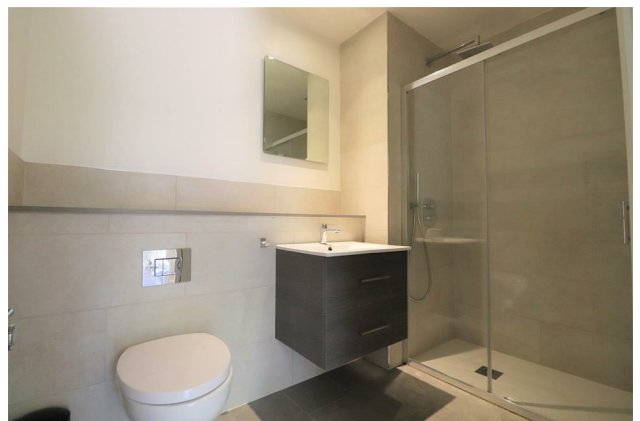
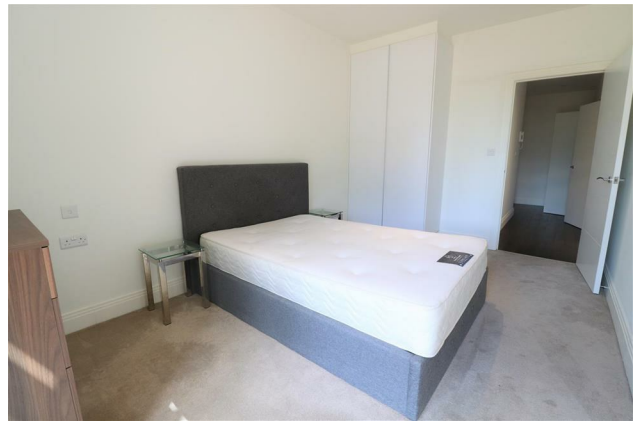
These particulars have been prepared upon information supplied by the Vendor and should be verified by your surveyors and solicitors. In accordance with the Property Misdescriptions Act 1991 we have prepared these sales particulars as a general guide to give a broad description of the property. They are not intended to constitute part of an offer or contract. We have not carried out a structural survey and the services, appliances and specific fittings have not been tested. All photographs, measurements, floor plans and distances referred to are given as a guide only and should not be relied upon for the purchase of carpets or any other fixtures or fittings. Lease details service charge and ground rent (where applicable) are given as a guide only and should be checked and confirmed by your solicitor prior to exchange of contract

Ground Floor
Approx. 67.5 sq. metres (726.3 sq. feet)



Total area: approx. 67.5 sq. metres (726.3 sq. feet)

Cameron



Whilst every care has been taken to ensure the accuracy of these particulars, none of the statements contained herein are to be relied upon as representations of fact. These particulars do not constitute an offer or contract.